

SENSORS & SOFTWARE
from RADIODETECTION



LMX200™

Utility locating with GPR made simple

Trying to avoid dangerous and
costly hits to critical utilities?

Want to find and map more
utilities at your job site?

Non-metallic utilities without tracer
wires giving you trouble?

If so, then LMX200™ is the right
GPR for you.



SPX 
TECHNOLOGIES

Overview

LMX200™ GPR complements traditional pipe and cable locators and allows you to locate and map targets below the surface.

- Metal utilities, including pipes and cables
- Non-metallic pipes, including PVC and asbestos cement
- Concrete storm and sewer systems
- Utilities where installed tracer wiring has failed
- Underground storage tanks and drainage tiles
- Septic system components
- Non-utility structures such as vaults, foundation walls and concrete pads

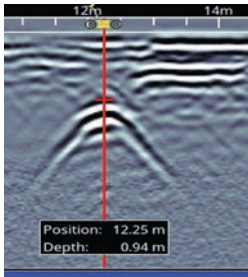


LMX200 features

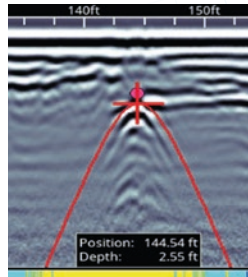
Rapidly locate **metallic** and **non-metallic** utilities

Enhance your productivity

Pinpoint Depth & Location



Easy Depth Calibration



No complex settings – Just press Start and push the cart.
Use hyperbola-fitting to ensure accurate depth measurements and backup over the target to display its location and depth.

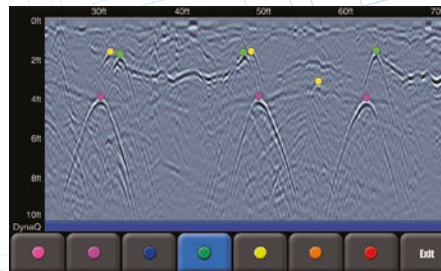
Dynamic Stacking (DynaQ®)

DynaQ automatically adjusts stacking (averaging) for the best data quality.



- ☐ White = No data (too fast!)
- ☐ Yellow = Moderate quality
- ☐ Light blue = Better quality
- ☐ Dark blue = Highest quality

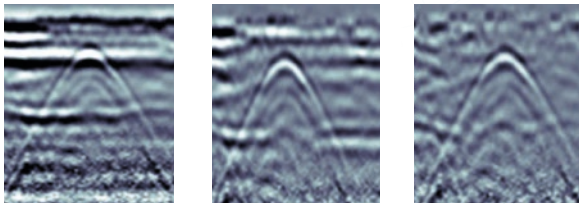
Color-coded field interpretations



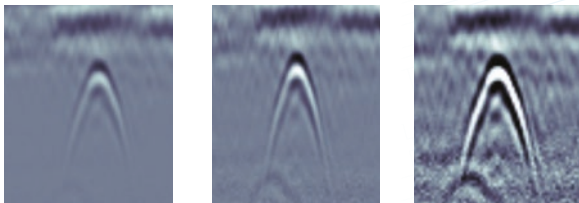
Classify your targets in real-time by selecting a color option and touching the screen.

Increase your target confidence in the field with image optimization

Preset Filters

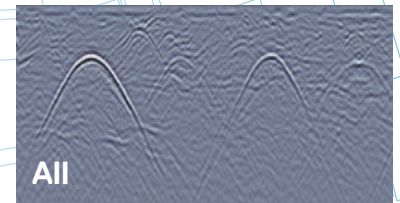
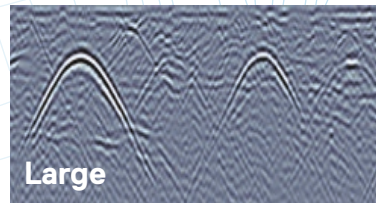
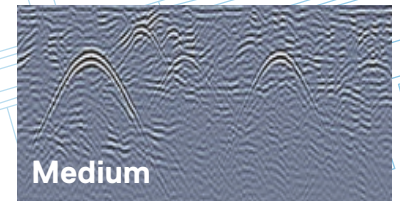
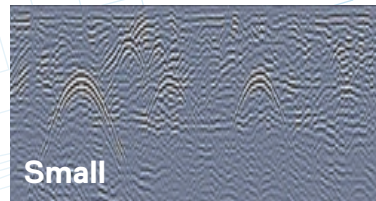


Adjustable Gain



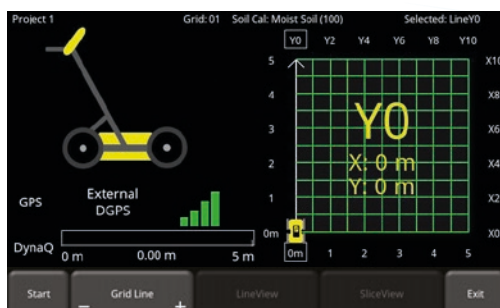
Optimize visibility of your targets with preset filters & gain.

Dynamic Target Enhancement (DynaT)



Enhance small, medium & large targets.

Grids & Depth Slices

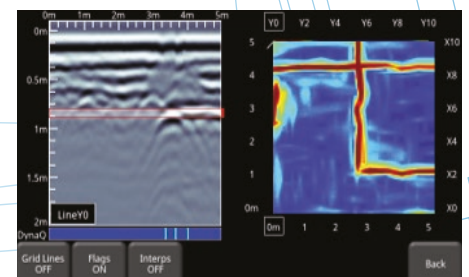
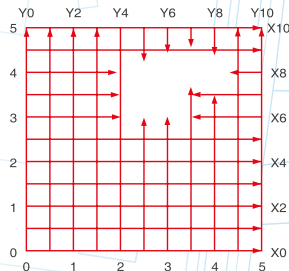


Flexible & guided grid collection

The LMX200 guides you through setup with pre-selected grid sizes. Stop lines early, or skip lines.

Obstacle avoidance

System guides data collection around an obstacle in your grid.



In-field Depth slices

Process grid data into depth slices and move down through your data to visualize targets at different depths. Depth Slice through multiple grids on-site.

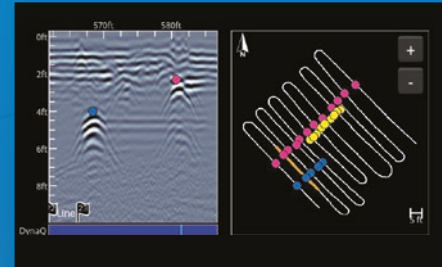
LMX200 Bundle

An all-in-one, plug-and-play solution to add high-accuracy positioning to your LMX200 GPR data

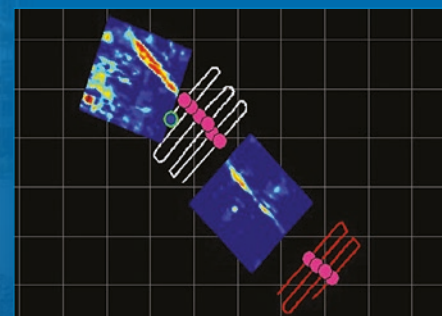
The SG bundle unlocks powerful locating & mapping advantages in the field and post-processing.

Features unlocked with **external GNSS**

Enhanced in-field locating




SplitView: Instantly see interpretations in MapView as you add them to hyperbolas in the cross-section, helping to identify utility targets.

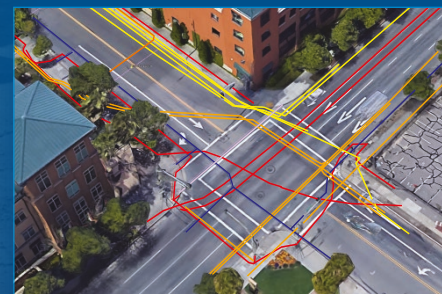



MapView: Visualize your entire GPR survey including depth slices, interpretations and flags to gain better understanding of complex locates.

Accurately map your findings

	A	B	C	D	E	F
1	Tool	Position (m)	Depth (m)	Latitude	Longitude	GPS-Elevation
2	Point	0.72	0.18	38.8345202	-9.1821844	16.63
3	Point	0.83	0.7	38.8345201	-9.1821826	16.6
4	Point	1.12	0.75	38.8345187	-9.1821798	16.59
5	Point	1.63	0.19	38.8345172	-9.1821759	16.56
6	Point	1.63	0.68	38.8345172	-9.1821759	16.56

CSV  Spreadsheet (.CSV) file with georeferenced flags and interpretations can be used to create maps in 3rd party mapping applications.



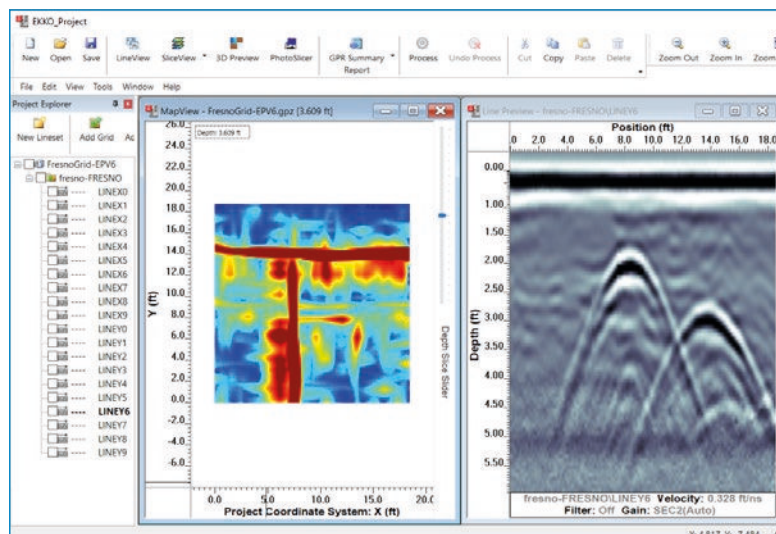
KMZ  Automatic KMZ output of lines, grids, interpretations and screenshots, allowing utility maps to be easily created.



Flexibility is at the heart of our mapping solutions, allowing customers to choose the solution that is most suitable for their business. With multiple file outputs, utility mapping experts can import utility locations into their advanced systems.

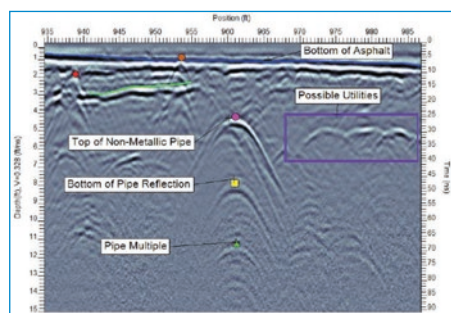
EKKO_Project™ Software

Visualize, Understand and Report your GPR results with the optional EKKO_Project PC Software

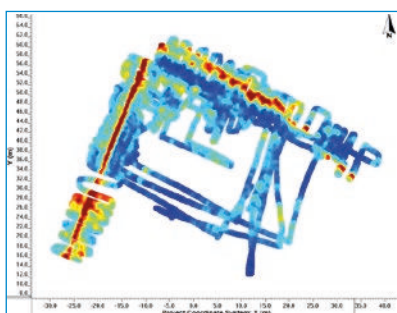


Core

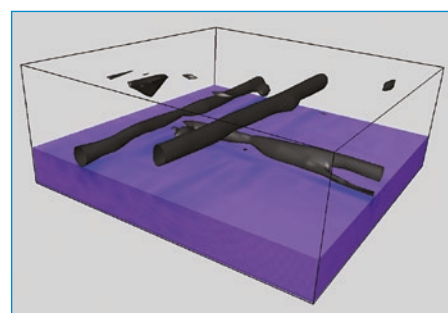
Organize your GPR data, photos and other files and save as a single project file. Easily create PDF reports of your findings.



Examine (Cross-sections)



Reveal (Depth Slices)



3D Reveal (3D Visualization)

Weight & Dimensions	
Size: 100 x 70 x 115 cm (39.4 x 27.6 x 45.3 in)	
Weight: 22 kg (48 lbs)	
Display Unit size: 21 cm (8 in) diagonal	
Power	
12 volt sealed lead acid gel cell	
Battery Capacity: 9.0 Ah	Battery Weight: 3.6 kg (7.9 lbs)
Battery Life: 4-6 hours	Charger: 110-240V

Environmental & Temperatures	
Ruggedized, environmentally sealed unit and connections	
IP65	Operating temperature range: -20°C to +50°C (-4°F to 122°F)
Regulatory Specifications	
Meets FCC 15.509, IC RSS-220 and ETSI EN-302066	
Data Storage	Depth
380 km (236 miles) of data	Up to 8 meters (26 feet)

Useful resources to make the most of your LMX:

- LMX200 training videos
- Utility Locating with GPR (Nulca-accredited) interactive and online course (SensoftU.com)
- Webinars and free online resources
- Learn more about our training offerings



Our Mission

Provide best in class equipment and solutions, to prevent damage to critical infrastructure, manage assets and protect lives.

Our Vision

To be the world's leader in the management of critical infrastructure and utilities.

Our Locations



USA

Raymond, ME
Kearneysville, WV

Canada

Mississauga, ON



Europe

United Kingdom **HQ**
France
Germany
The Netherlands



Asia Pacific

India
Hong Kong
Australia

Visit: **www.sensoft.ca**

Follow us on:    

FRONTIER PRECISION
G E O S P A T I A L
sales@frontierprecision.com
www.frontierprecision.com/solutions/geospatial

CONTACT US

